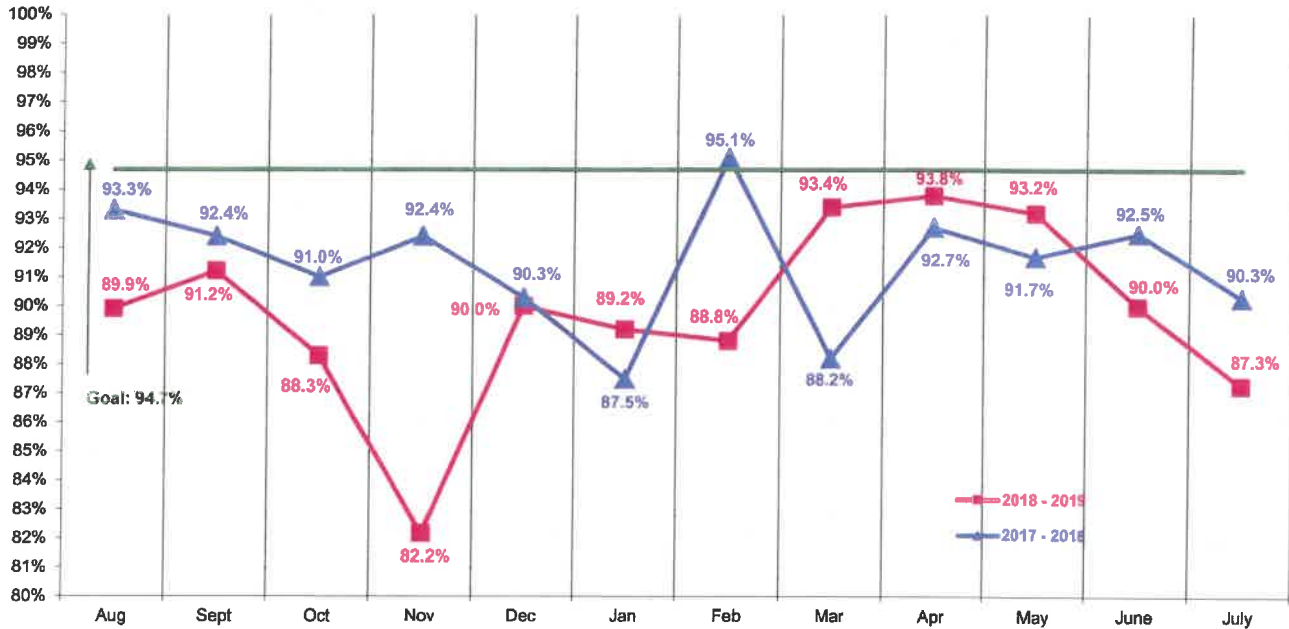


NJ TRANSIT ON-TIME PERFORMANCE RAIL AUGUST 2017 - JULY 2019

% Trains Reported Within 6 Minutes of Schedule



	June, 2019	July, 2019	% Change
One-Month Comparison	90.0%	87.3%	-2.7%
July Comparison	2018 90.3%	2019 87.3%	# Change -3.0%
12-Month Average August, 2018- July, 2019	2017-2018 91.5%	2018-2019 89.8%	# Change -1.7%

Analysis:

Rail On-Time Performance was 87.3% for July, 2019. Of the 17,801 trains scheduled to operate, 15,537 were on time, while 2,264 trains (or 12.7%) were delayed. Key causes included:

- Amtrak equipment issues, NJT equipment issues and manpower shortages contributed to 135 delays resulting in 77.0% OTP on July 1.
- Amtrak wire issues, NJT Signal problems and weather contributed to 119 delays resulting in 78.6% OTP on July 11.
- Amtrak trackside interference and signal issues, Metro North signal problems, NJT trackside interference, signal failure and shortage of equipment contributed to 157 delays resulting in 74.0% OTP on July 22.

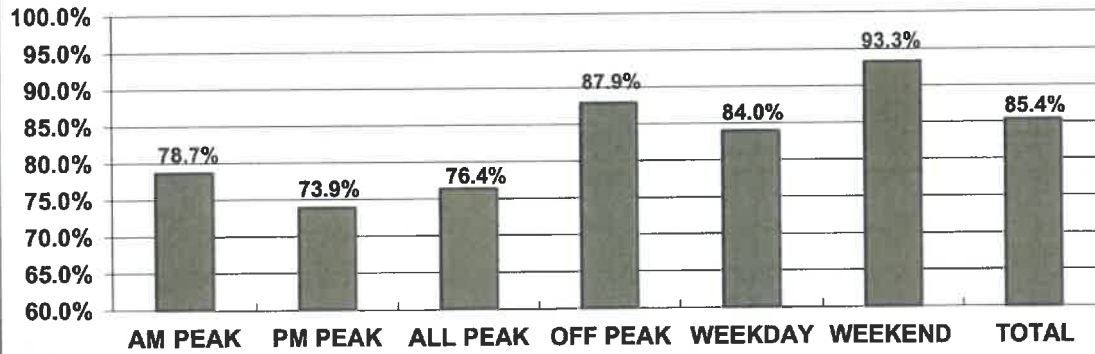
The 12-month average for Rail On-Time Performance was 89.8%, which has decreased by 1.7%.

ON-TIME PERFORMANCE RAIL

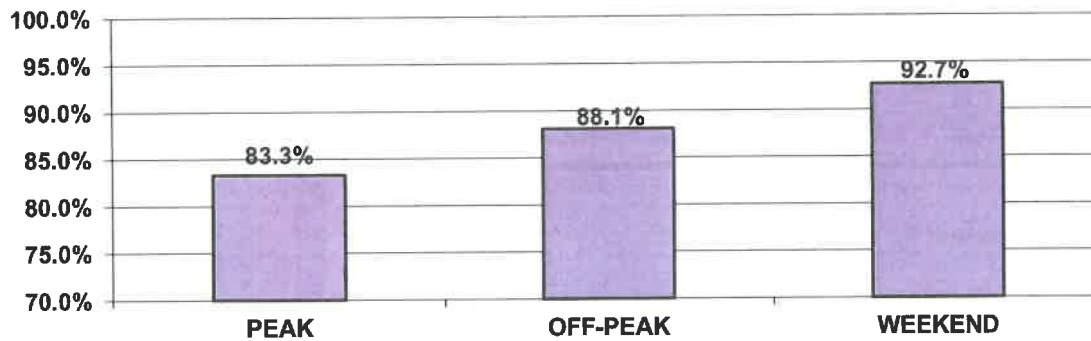
SUMMARY BY TIME PERIOD JULY, 2019

* NOTE: A train is reported late if it arrives at its final station stop more than 5:59 minutes later than the advertised schedule.

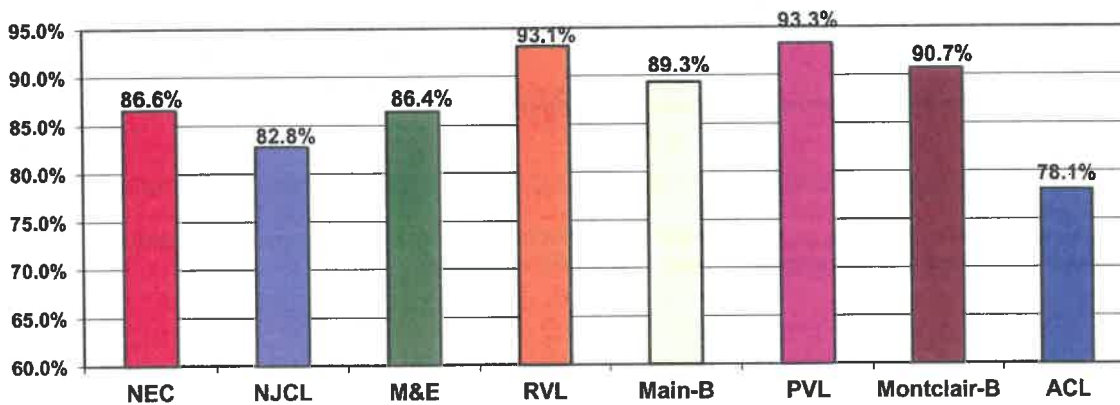
% NEW YORK PENN STATION Trains Reported On Time *



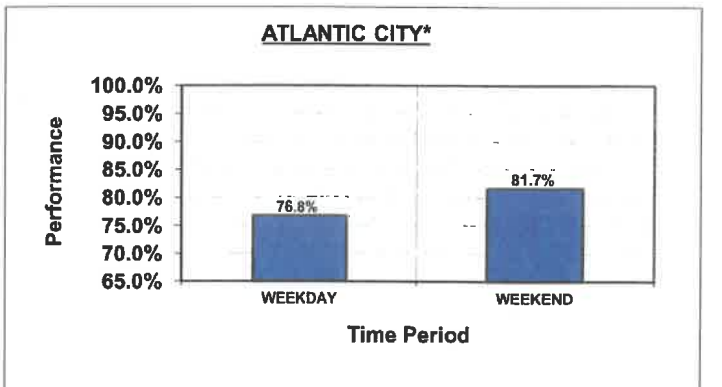
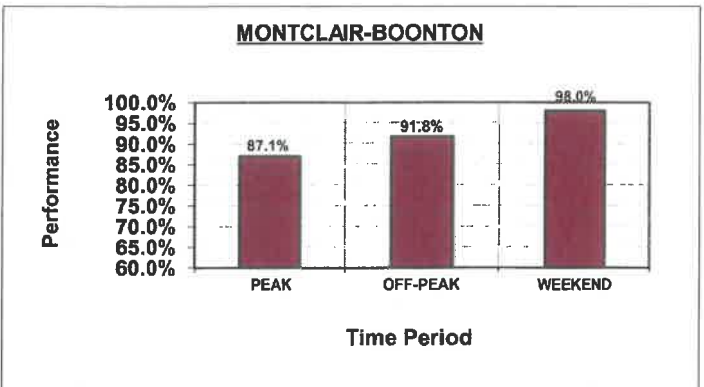
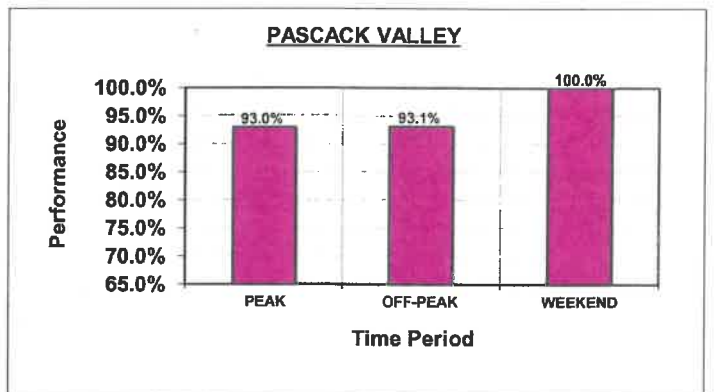
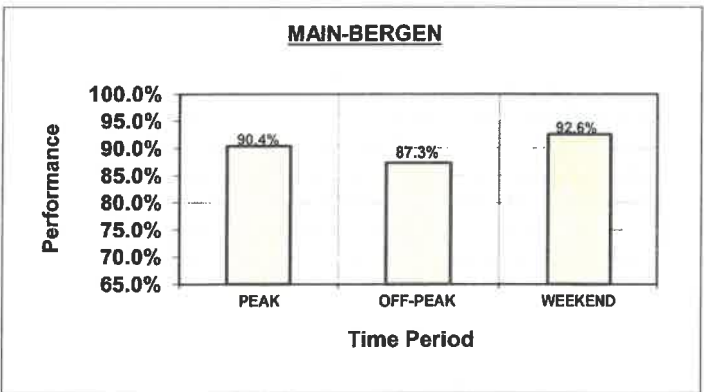
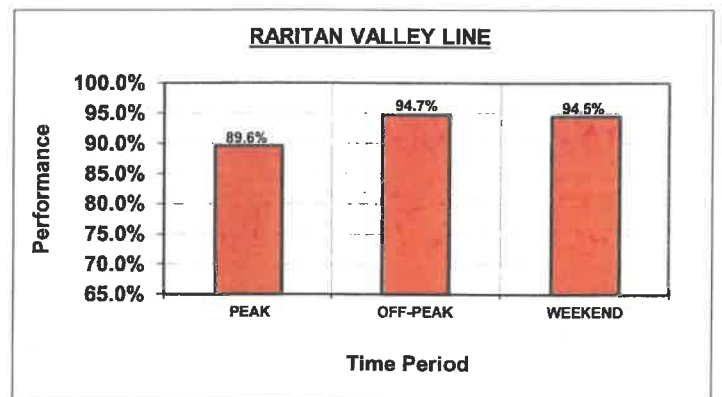
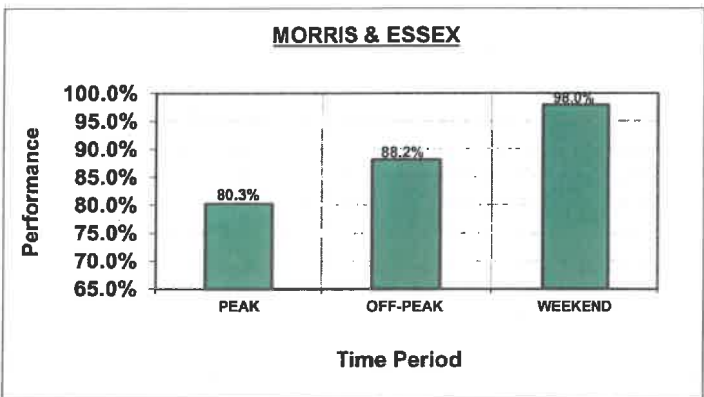
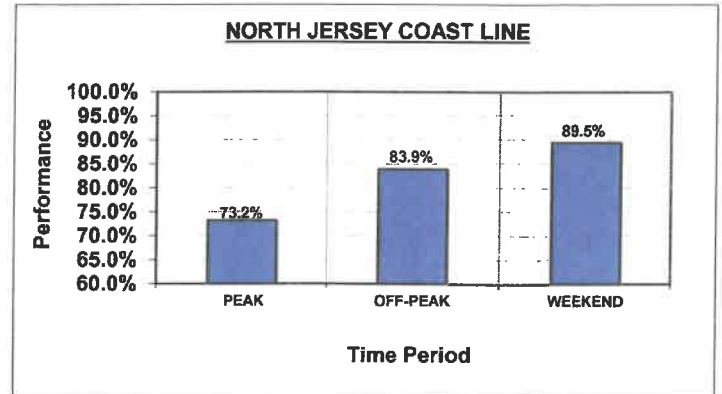
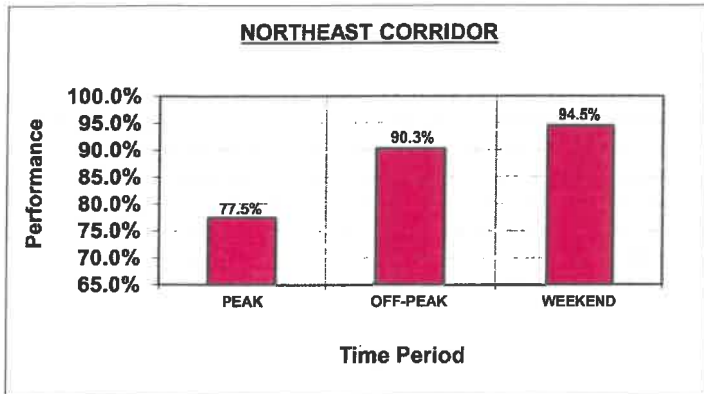
% SYSTEMWIDE Trains Reported On Time



% BY LINE Trains Reported On Time



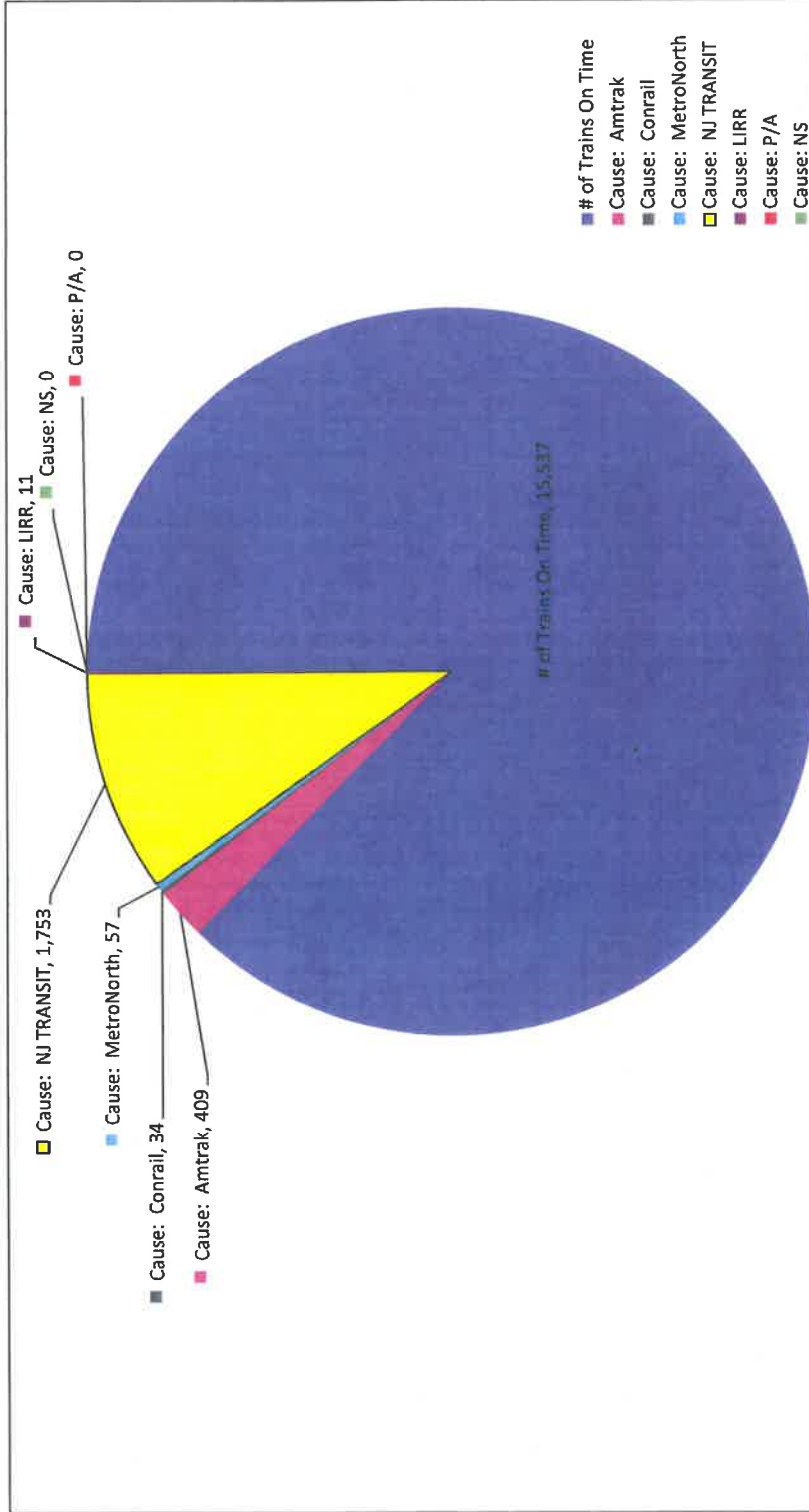
ON-TIME PERFORMANCE BY RAIL LINE & TIME PERIOD JULY 2019



NJ TRANSIT Performance - JULY, 2019

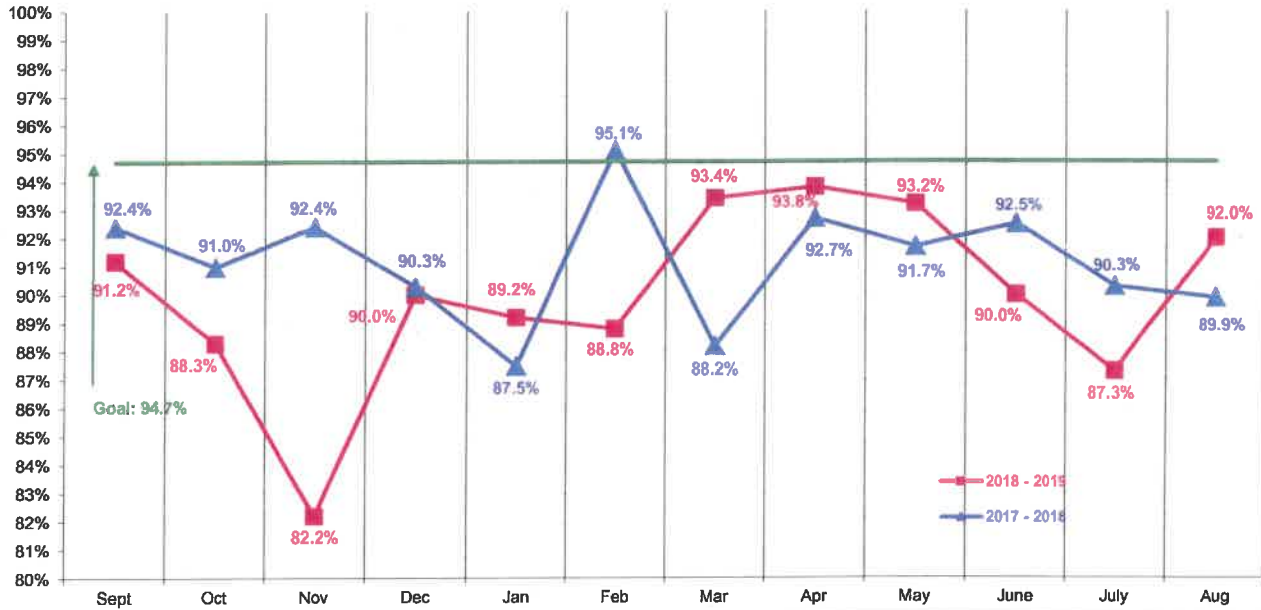
Late NJ TRANSIT Trains

# of Trains On Time	15,537	Cause: Amtrak	409	Cause: Conrail	34	Cause: MetroNorth	57	Cause: NJ TRANSIT	1,753	Cause: LIRR	11	Cause: P/A	0	Cause: NS	0
# of Late Trains	2,264		2.30%		0.19%		0.32%		9.85%		0.06%		0.00%		0.00%
Total # of Trains	17,801														
Percentage On Time	87.3%														



NJ TRANSIT ON-TIME PERFORMANCE RAIL SEPTEMBER 2017 - AUGUST 2019

% Trains Reported Within 6 Minutes of Schedule



	July, 2019	August, 2019	% Change
One-Month Comparison	87.3%	92.0%	4.7%
	2018	2019	# Change
August Comparison	89.9%	92.0%	2.1%
	2017-2018	2018-2019	# Change
12-Month Average Sept., 2018 - August, 2019	91.2%	90.0%	-1.2%

Analysis:

Rail On-Time Performance was 92.0% for August, 2019. Of the 17,747 trains scheduled to operate, 16,336 were on time, while 1,411 trains (or 8.0%) were delayed. Key causes included:

- Weather Issues, NJT manpower shortage, trackside interference and equipment issues contributed to 68 delays resulting in 86.3 OTP on August 7.
- NJT programmed maintenance, weather and a fatality contributed to 95 delays resulting in 82.0% OTP on August 9.
- NJT PTC work, manpower shortage and equipment issues contributed to 43 delays resulting in 88.4% OTP on August 22.

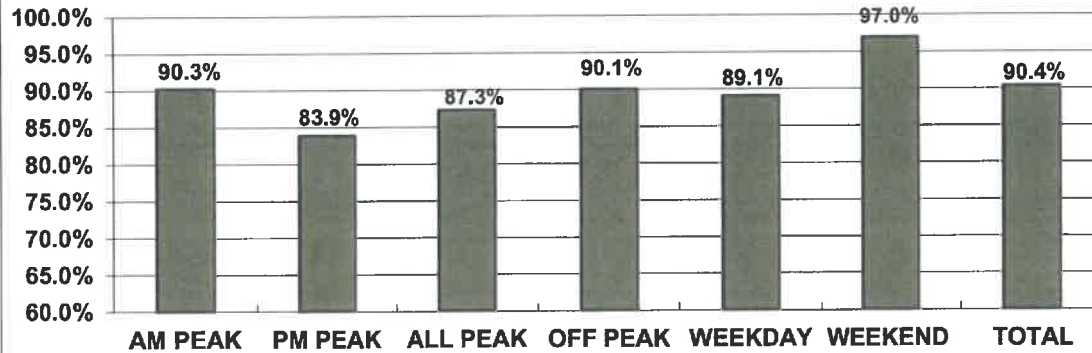
The 12-month average for Rail On-Time Performance was 90.0%, which has decreased by 1.2%.

ON-TIME PERFORMANCE RAIL

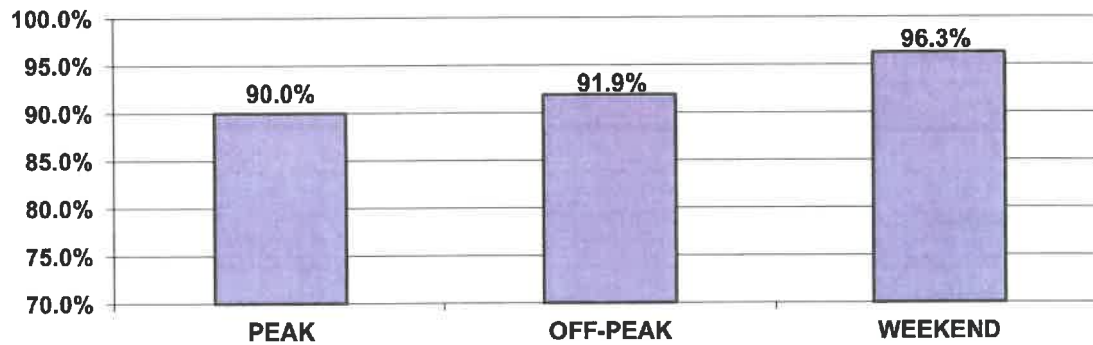
SUMMARY BY TIME PERIOD AUGUST, 2019

* NOTE: A train is reported late if it arrives at its final station stop more than 5:59 minutes later than the advertised schedule.

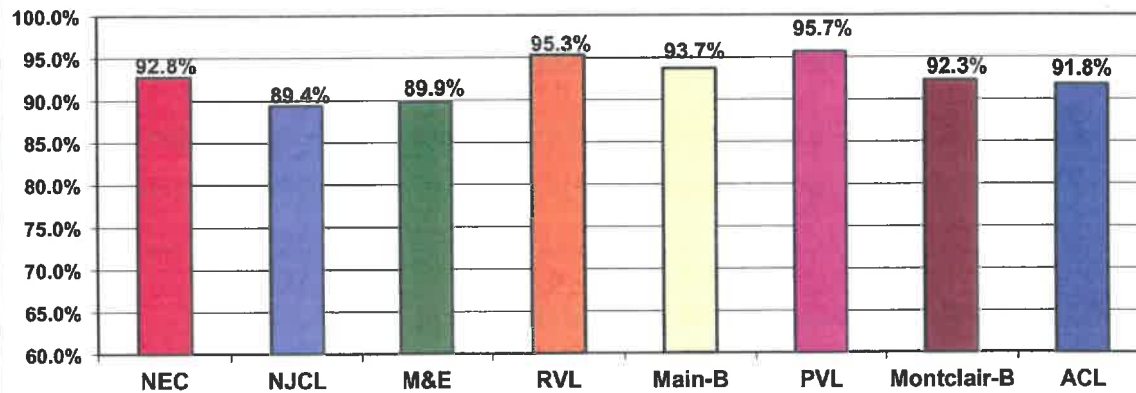
% NEW YORK PENN STATION Trains Reported On Time *



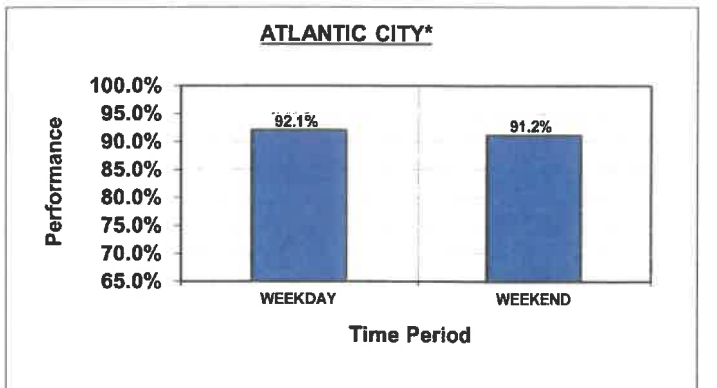
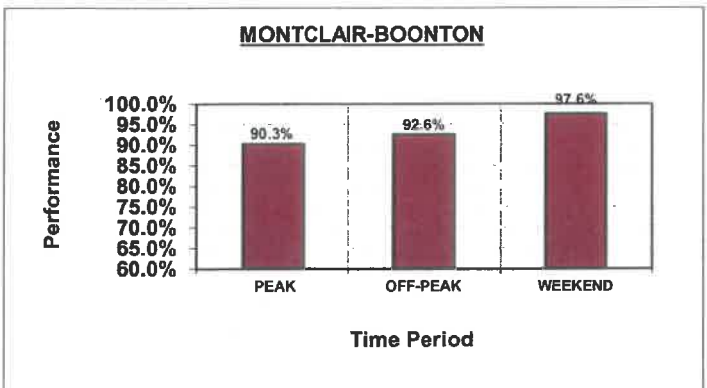
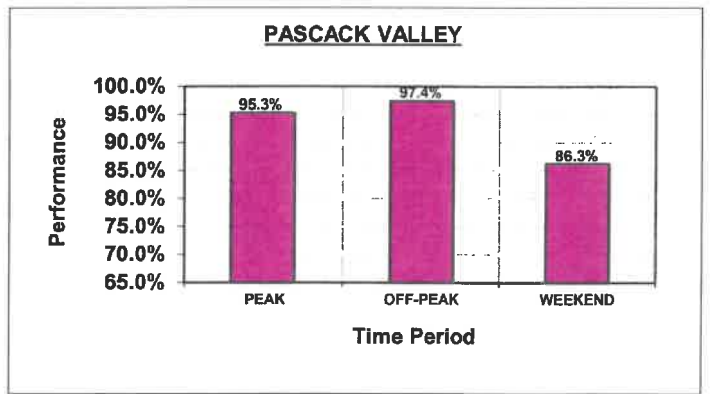
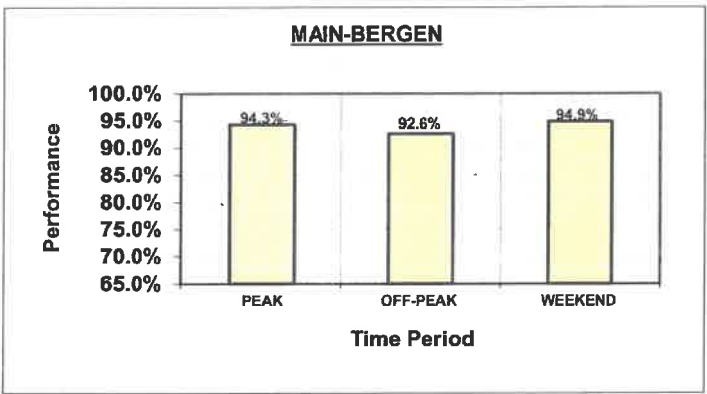
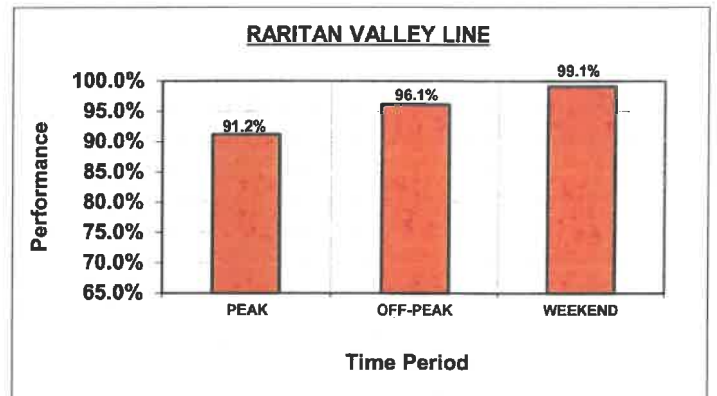
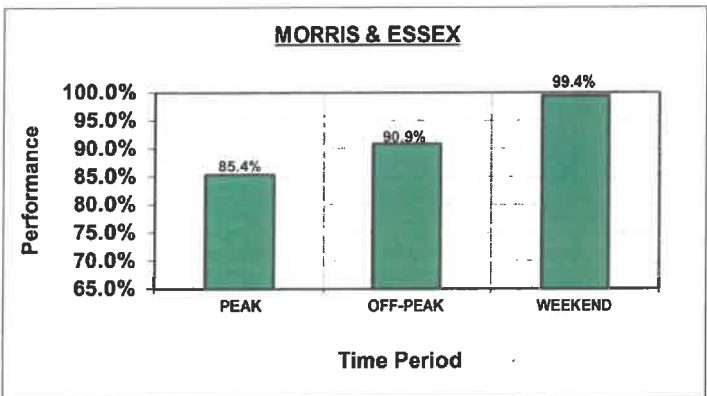
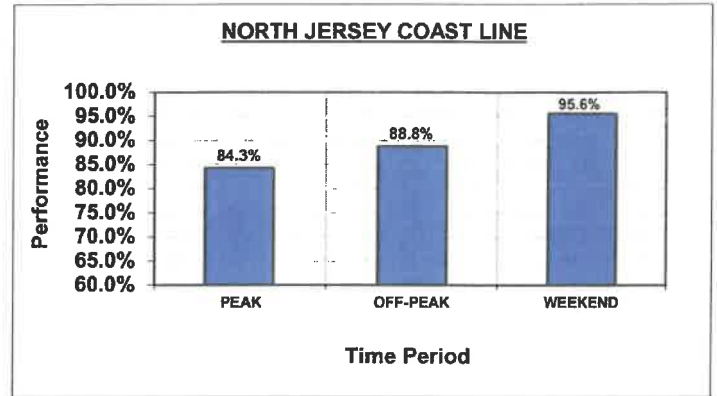
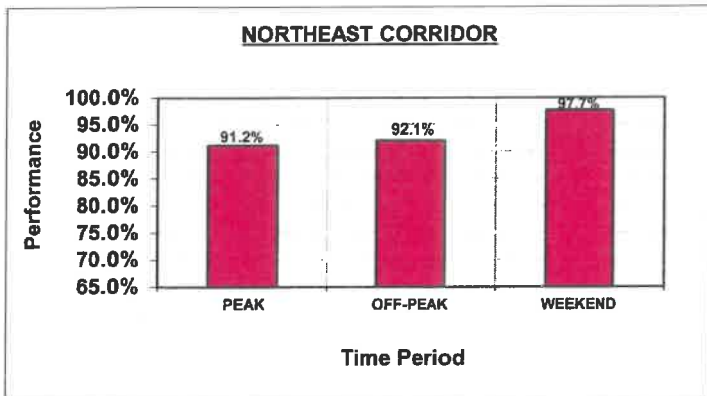
% SYSTEMWIDE Trains Reported On Time



% BY LINE Trains Reported On Time



ON-TIME PERFORMANCE BY RAIL LINE & TIME PERIOD AUGUST, 2019



NJ TRANSIT Performance - JULY, 2019

Late NJ TRANSIT Trains

# of Trains On		Cause: Amtrak	Cause: Conrail	Cause: MetroNorth	Cause: NJ TRANSIT	Cause: LIRR	Cause: P/A	Cause: NS
# of Trains On Time	16,336	240	57	29	1,085	0	0	0
# of Late Trains	1,411	1.35%	0.32%	0.16%	6.11%	0.00%	0.00%	0.00%
Total # of Trains	17,747							
Percentage On Time	92.0%							

