

To Woodbridge Center

Weekdays/Saturdays

	NEW BRUNSWICK Somerset St. at George St.	HIGHLAND PARK NJ 27 at Woodbridge Ave.	EDISON NJ 27 at Plainfield Ave.	METUCHEN RAIL STATION Main St. at Woodbridge Ave.	METUCHEN Main St. at NJ 27	EDISON Menlo Park Mall	FORDS (WOODBIDGE) Main St. at Ford Ave.	WOODBIDGE Woodbridge Center
	A.M.	A.M.	A.M.	A.M.	A.M.	A.M.	A.M.	A.M.
D	6.00	6.10	6.15	6.25	6.30	6.40	6.45	6.50
	7.00	7.10	7.15	7.25	7.30	7.40	7.45	7.50
	8.00	8.10	8.15	8.25	8.30	8.40	8.45	8.50
	9.00	9.10	9.15	9.25	9.30	9.40	9.45	9.50
	10.00	10.10	10.15	10.25	10.30	10.40	10.45	10.50
	11.00	11.10	11.15	11.25	11.30	11.40	11.45	11.50
	P.M.	P.M.	P.M.	P.M.	P.M.	P.M.	P.M.	P.M.
	12.00	12.10	12.15	12.25	12.30	12.40	12.45	12.50
	1.00	1.10	1.15	1.25	1.30	1.40	1.45	1.50
	2.00	2.10	2.15	2.25	2.30	2.40	2.45	2.50
	3.00	3.10	3.15	3.25	3.30	3.40	3.45	3.50
	4.00	4.10	4.15	4.25	4.30	4.40	4.45	4.50
	5.00	5.10	5.15	5.25	5.30	5.40	5.45	5.50
	6.00	6.10	6.15	6.25	6.30	6.40	6.45	6.50
	7.00	7.10	7.15	7.25	7.30	7.40	7.45	7.50
	8.00	8.10	8.15	8.25	8.30	8.40	8.45	8.50
	9.00	9.10	9.15	9.25	9.30	9.40	9.45	9.50

D - Trip operates Weekdays only.

Customer Services

Commendations/Complaints

Customer Service 1 (973) 275-5555

Ticket Refund

Ticket Refunds are not available for one-way or round trip tickets. For all other refund requests please visit www.njtransit.com for the refund policy or call 1 (973) 275-5555 and press #1 for "Bus Information", then press #2 for "Bus Refund Information".

Sundays

	NEW BRUNSWICK Somerset St. at George St.	HIGHLAND PARK NJ 27 at Woodbridge Ave.	EDISON NJ 27 at Plainfield Ave.	METUCHEN RAIL STATION Main St. at Woodbridge Ave.	METUCHEN Main St. at NJ 27	EDISON Menlo Park Mall	FORDS (WOODBIDGE) Main St. at Ford Ave.	WOODBIDGE Woodbridge Center
	A.M.	A.M.	A.M.	A.M.	A.M.	A.M.	A.M.	A.M.
	10.00	10.10	10.15	10.25	10.30	10.40	10.45	10.50
	11.00	11.10	11.15	11.25	11.30	11.40	11.45	11.50
	P.M.	P.M.	P.M.	P.M.	P.M.	P.M.	P.M.	P.M.
	12.00	12.10	12.15	12.25	12.30	12.40	12.45	12.50
	1.00	1.10	1.15	1.25	1.30	1.40	1.45	1.50
	2.00	2.10	2.15	2.25	2.30	2.40	2.45	2.50
	3.00	3.10	3.15	3.25	3.30	3.40	3.45	3.50
	4.00	4.10	4.15	4.25	4.30	4.40	4.45	4.50
	5.00	5.10	5.15	5.25	5.30	5.40	5.45	5.50

Please...

For the comfort of all, observe these simple rules while riding the bus:

- No smoking.
- No eating or drinking.
- No littering.
- Use headphones if you're listening to a radio.
- Speak softly when using cellular phones.

Smoking is not allowed on buses, in terminals, or on platforms.

Security Hot Line
1 (888) TIPS NJT
 To report suspicious activities or packages.

How to use this schedule

1. Choose the direction you wish to travel and locate the WEEKDAY, SATURDAY or SUNDAY schedule. Timepoints are listed from the beginning of the route (on the left) to the end (on the right).
2. Timepoints in the schedule correspond with the timepoint dots on the map. If your stop is between two timepoints, use the earlier time as a guide.
3. If there is a letter to the left of the times listed for the trip you wish to take, look for the explanation under or next to the schedule block.
4. Check departure location information on front, if applicable. Be sure to see other special notes for more information.
5. Be sure to check the bus destination sign before boarding the bus.

Information in this timetable is subject to change without notice. Traffic conditions, construction, and weather can affect trip time.

NJ Transit Information

Schedule, Fare and Lost & Found

Transit Information & Lift
 Equipped Bus Reservations . . . 1 (973) 275-5555
 Text Telephone (TT) 1 (800) 772-2287
 Lost & Found 1 (732)442-6969
 Journal Square Transportation
 Center Information 1 (800) 234-7284
 AMTRAK Information 1 (800) 872-7245
 NY Waterway Bus/Ferry
 Information 1 (800) 53-FERRY
 Long Island Railroad
 Information 1 (718) 217-5477
 Metro-North Commuter Railroad
 Information 1 (212) 532-4900
 Newark Airport Ground
 Transportation Information . . . 1 (800) 247-7433
 NYC Transit Authority
 Information (Bus and Subway) 1 (718) 330-1234
 PATH Information 1 (800) 234-7284

Service on this line is operated by Academy Express under contract with NJ TRANSIT.

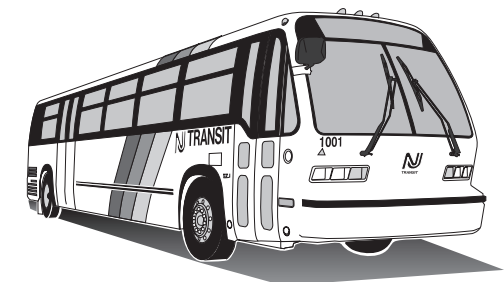
810

NEW BRUNSWICK WOODBRIDGE CENTER

Effective: June 23, 2007

Revised: September 2009

Serving: New Brunswick
 Rutgers University
 Highland Park
 Edison
 Metuchen
 Menlo Park Mall
 Roosevelt Care Center
 Woodbridge (Fords)
 Woodbridge Center

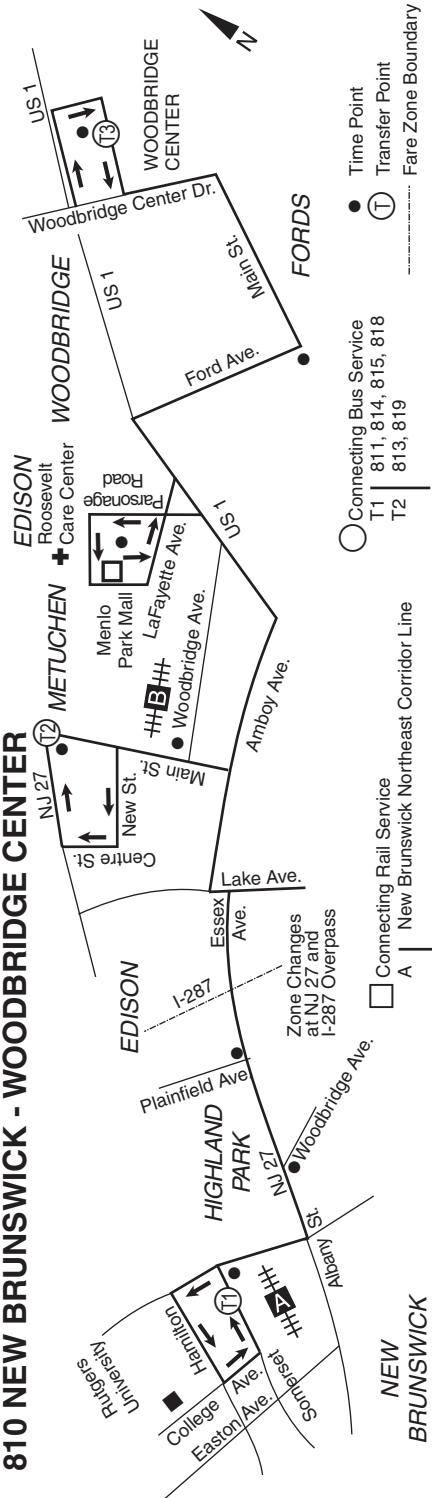


Customer Service Stars
 Someone make your trip better? Tell us who.

njtransit.com/stars



810 NEW BRUNSWICK - WOODBRIDGE CENTER



○ Connecting Bus Service
 T1 811, 814, 815, 818
 T2 813, 819

● Time Point
 T Transfer Point
 — Fare Zone Boundary

□ Connecting Rail Service
 A New Brunswick Northeast Corridor Line

Zone Changes at NJ 27 and I-287 Overpass

To New Brunswick

Weekdays/Saturdays

	WOODBRIDGE Woodbridge Center	FORDS (WOODBIDGE) Main St. at Ford Ave.	EDISON Menlo Park Mall	METUCHEN RAIL STATION Main St. at Woodbridge Ave.	METUCHEN Main St. at NJ 27	EDISON NJ 27 at Plainfield Ave.	HIGHLAND PARK NJ 27 at Woodbridge Ave.	NEW BRUNSWICK Somerset St. at George St.
D	A.M. 6:00 7:00 8:00 9:00	A.M. 6:10 7:10 8:10 9:10	A.M. 6:15 7:15 8:15 9:15	A.M. 6:25 7:25 8:25 9:25	A.M. 6:30 7:30 8:30 9:30	A.M. 6:40 7:40 8:40 9:40	A.M. 6:45 7:45 8:45 9:45	A.M. 6:55 7:55 8:55 9:55
	10:00 11:00 P.M. 12:00 1:00	10:10 11:10 P.M. 12:10 1:10	10:15 11:15 P.M. 12:15 1:15	10:25 11:25 P.M. 12:25 1:25	10:30 11:30 P.M. 12:30 1:30	10:40 11:40 P.M. 12:40 1:40	10:45 11:45 P.M. 12:45 1:45	10:55 11:55 P.M. 12:55 1:55
	2:00 3:00 4:00 5:00 6:00	2:10 3:10 4:10 5:10 6:10	2:15 3:15 4:15 5:15 6:15	2:25 3:25 4:25 5:25 6:25	2:30 3:30 4:30 5:30 6:30	2:40 3:40 4:40 5:40 6:40	2:45 3:45 4:45 5:45 6:45	2:55 3:55 4:55 5:55 6:55
	7:00 8:00 9:00 10:15	7:10 8:10 9:10 10:25	7:15 8:15 9:15 10:30	7:25 8:25 9:25 10:40	7:30 8:30 9:30 10:45	7:40 8:40 9:40 11:00	7:45 8:45 9:45 11:00	7:55 8:55 9:55 11:10

D - Trip operates Weekdays only.



All trips are operated with lift-equipped buses.



If you have a disability that prevents you from using the bus, information about Access Link, NJ TRANSIT's ADA paratransit service is available by calling 1 (800) 955-2321.

Sundays

	WOODBRIDGE Woodbridge Center	FORDS (WOODBIDGE) Main St. at Ford Ave.	EDISON Menlo Park Mall	METUCHEN RAIL STATION Main St. at Woodbridge Ave.	METUCHEN Main St. at NJ 27	EDISON NJ 27 at Plainfield Ave.	HIGHLAND PARK NJ 27 at Woodbridge Ave.	NEW BRUNSWICK Somerset St. at George St.
	A.M. 11:00 P.M. 12:00 1:00	A.M. 11:10 P.M. 12:10 1:10	A.M. 11:15 P.M. 12:15 1:15	A.M. 11:25 P.M. 12:25 1:25	A.M. 11:30 P.M. 12:30 1:30	A.M. 11:40 P.M. 12:40 1:40	A.M. 11:45 P.M. 12:45 1:45	A.M. 11:55 P.M. 12:55 1:55
	2:00 3:00 4:00 5:00 6:00 7:30	2:10 3:10 4:10 5:10 6:10 7:40	2:15 3:15 4:15 5:15 6:15 7:45	2:25 3:25 4:25 5:25 6:25 7:55	2:30 3:30 4:30 5:30 6:30 8:00	2:40 3:40 4:40 5:40 6:40 8:10	2:45 3:45 4:45 5:45 6:45 8:15	2:55 3:55 4:55 5:55 6:55 8:25

Holiday Service Guide

Holiday	Date	Schedule in Effect
Columbus Day	Mon. 10/12/2009	Weekday
Veterans Day	Wed. 11/11/2009	Weekday
Thanksgiving Day	Thu. 11/26/2009	No Service
Friday After Thanksgiving	Fri. 11/27/2009	Weekday
Christmas Day	Fri. 12/25/2009	No Service
New Year's Day	Fri. 1/1/2010	Sunday
Martin Luther King Jr. Day	Mon. 1/18/2010	Weekday
Presidents' Day	Mon. 2/15/2010	Weekday
Good Friday	Fri. 4/2/2010	Weekday
Memorial Day	Mon. 5/31/2010	Sunday
Independence Day	Sun. 7/4/2010	Sunday
Independence Day (Observed)	Mon. 7/5/2010	Saturday
Labor Day	Mon. 9/6/2010	Sunday
Columbus Day	Mon. 10/11/2010	Weekday

Fare Information

This is an exact fare line. Passengers are required to have exact fare when boarding buses on this line. One dollar bills and most U.S. coins are accepted. Drivers do not carry money and cannot make change.

How to determine your fare

Your fare is based on the number of zones you travel through. Check the map on this schedule to see how many zones you travel. Each time you cross a zone boundary, you must pay for another zone.

Cash Fares

Zone	1	2	Transfer
Adult	\$1.35	\$2.15	\$0.65
Children & Sr. Citizens	\$0.65	\$1.00	\$0.30

Transfers must be purchased when boarding bus.

Reduced Fare Program

Children's Fares - Ages 5-11 save 50% or more from regular one-way fares at all times. Up to three children ages four and under ride free with a passenger paying any fare.

Senior Citizens 62 and older and passengers with disabilities can travel on-board NJ TRANSIT trains, buses, and light rail vehicles at a reduced fare of one-half the regular one-way fare or less at all times. **Seniors Citizens 62 and older** may be asked to present a valid ID (any ID or document printed with your date of birth and issued by a government, social service, or mass transportation agency) to obtain the reduced fare. Valid ID for Seniors 65 and older also includes the MTA Reduced Fare Card; PA Senior Citizen Transit ID or PACE Card; PATH Senior Fare Card; or Medicare Card. **Passengers with disabilities** must present an NJ TRANSIT Reduced Fare ID or Medicare Card to obtain the reduced fare. Call (973) 378-6401 for more information on the Reduced Fare Program.

Monthly Passes are available for frequent riders at a substantial discount from the regular fare. Buy a pass from a NJ TRANSIT ticket agent or ticket vending machine. Visit njtransit.com for more information.

You Can Ride With Your Rail Pass

Passengers with NJ TRANSIT rail monthly or weekly passes printed with a bus-zone number may use their passes on NJ TRANSIT buses up to the number of imprinted bus-zones during the period that the pass is valid. Passes that are not printed with a bus-zone number will not be accepted on NJ TRANSIT buses.